

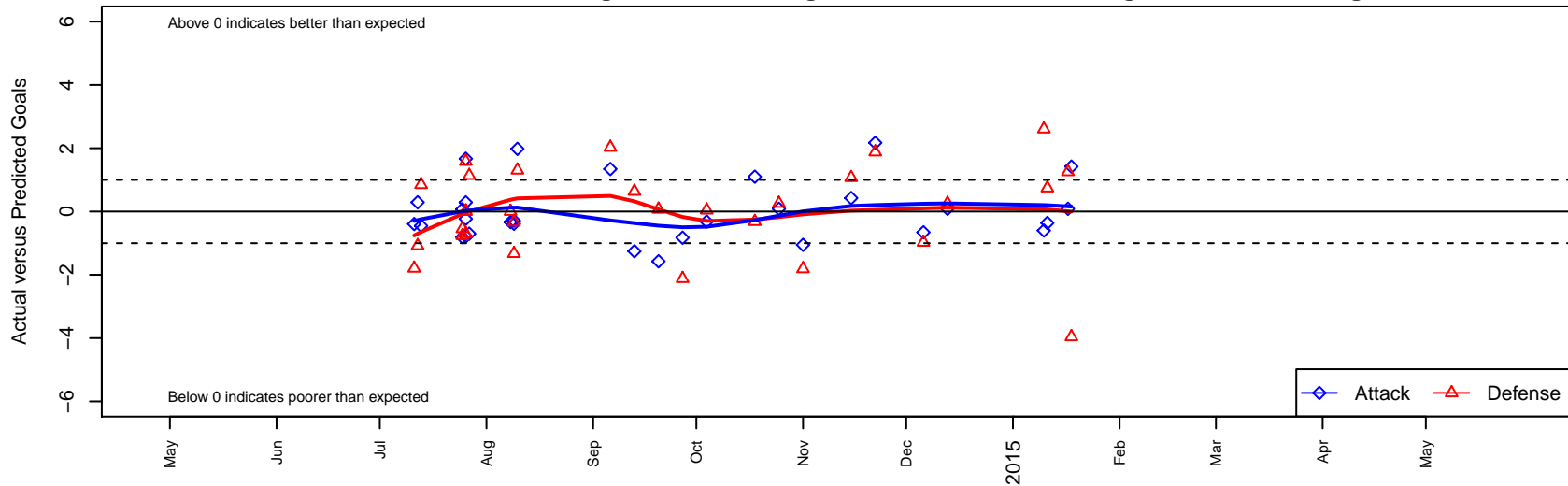
# Seattle United NE White B02

Seattle United Regional  
 Seattle, WA  
 B02 total strength=292  
 attack=0.23 defense=0.13  
 fall league = NPSL B12D3

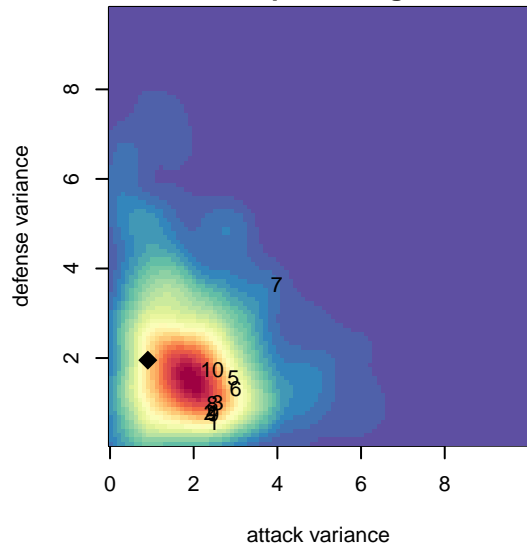
alt names used:  
 SU Northeast B02 White  
 SU NE White [B02]  
 Seattle United White  
 Seattle United NE B02 White  
 Seattle United NE B02 White  
 Seattle United NE B02 White

Venues played:  
 2014 Seattle Cup BU12  
 2014 Crossfire Select Cup BU12 Silver  
 2014 Sounders FC Cup BU12  
 2014 Shoreline Classic BU12  
 2014 NPSL B12D3  
 2014 Founders Cup B02

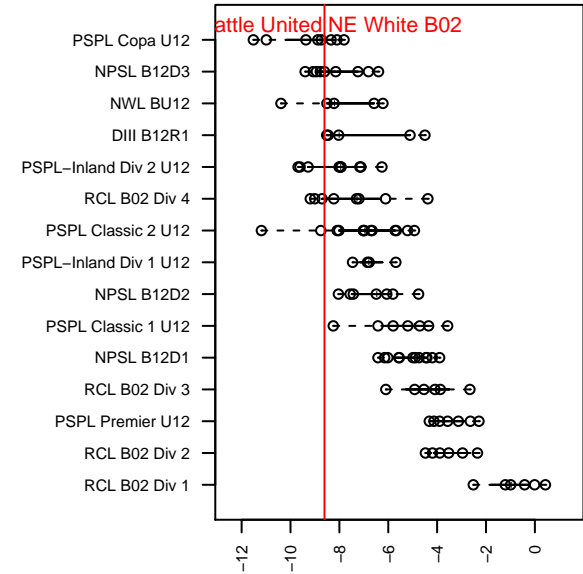
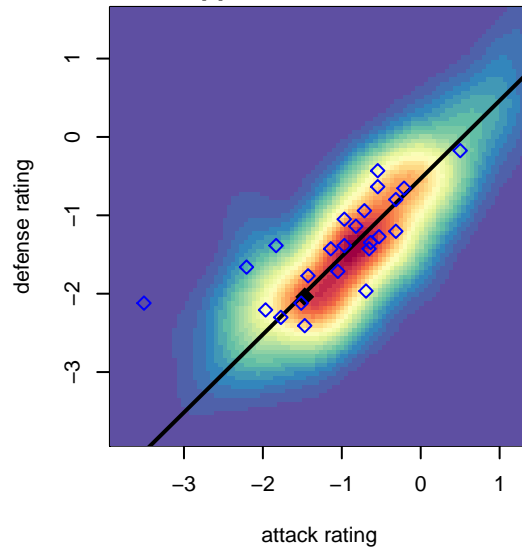
**Seattle United NE White B02**  
 Dots are actual minus expected GF (blue circles) and GA (red triangles).  
 Blue line is smoothed change in attack strength. Red is smoothed change in defense strength.



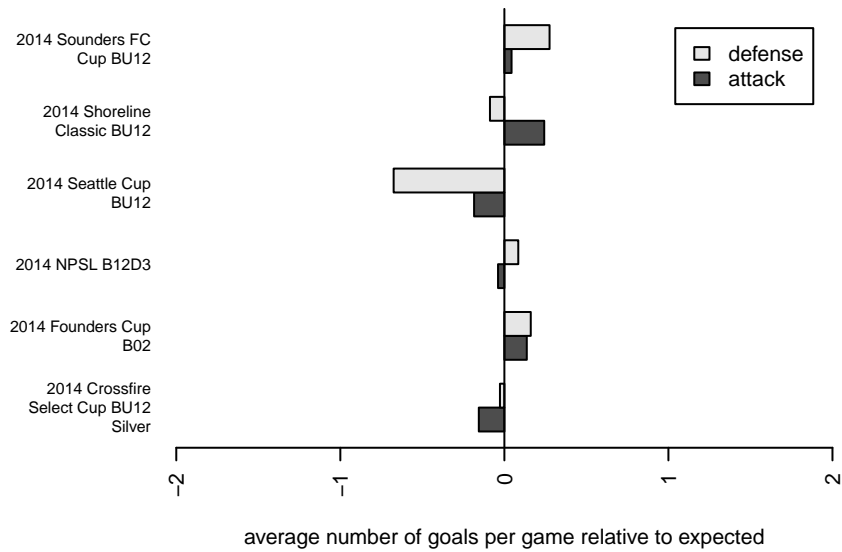
**attack and defense variance (black dot)  
relative to other teams  
and top 10 in region**



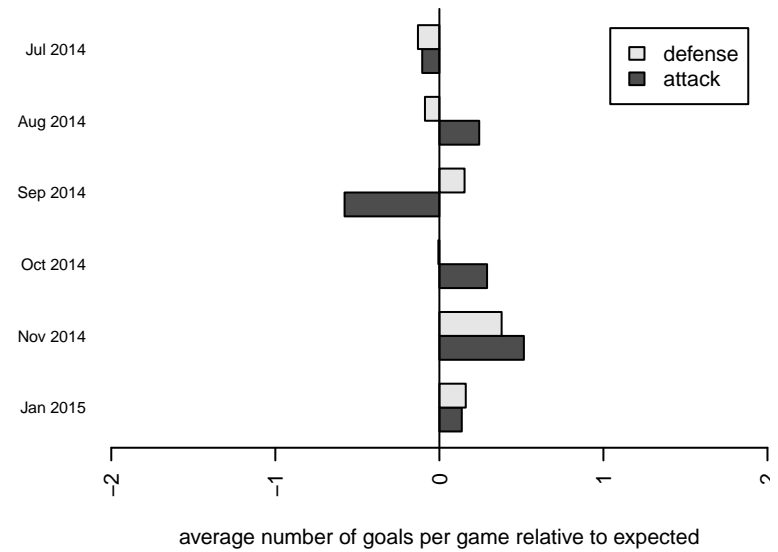
**attack and defense rating  
relative to others at age  
and all opponents in last 13 months**



**Performance relative to 13 month average**



**Performance relative to 13 month average**



| date       | home                          |    | away                              |   | venue                                 | pred.home | pred.away |
|------------|-------------------------------|----|-----------------------------------|---|---------------------------------------|-----------|-----------|
| 2015-01-18 | Crossfire Select Johnson B02  | 8  | Seattle United NE White B02       | 2 | 2014 Founders Cup B02                 | 4.04      | 0.58      |
| 2015-01-17 | Seattle United NE White B02   | 1  | Newport FC Predator B02           | 0 | 2014 Founders Cup B02                 | 0.91      | 1.26      |
| 2015-01-11 | Mercer Island FC Wolfpack B02 | 4  | Seattle United NE White B02       | 0 | 2014 Founders Cup B02                 | 4.74      | 0.36      |
| 2015-01-10 | Seattle United NE White B02   | 0  | NSC Fuego B02                     | 1 | 2014 Founders Cup B02                 | 0.60      | 3.60      |
| 2014-12-13 | Newport FC Predator B02       | 1  | Seattle United NE White B02       | 1 | 2014 NPSL B12D3                       | 1.26      | 0.91      |
| 2014-12-06 | Seattle United NE White B02   | 0  | WS Wildcats B02                   | 4 | 2014 NPSL B12D3                       | 0.66      | 3.03      |
| 2014-11-22 | Silver Lake Bombers B02       | 1  | Seattle United NE White B02       | 3 | 2014 NPSL B12D3                       | 2.88      | 0.83      |
| 2014-11-15 | Seattle United NE White B02   | 2  | FME Xtreme B02                    | 3 | 2014 NPSL B12D3                       | 1.57      | 4.07      |
| 2014-11-01 | BIFC White B02                | 3  | Seattle United NE White B02       | 1 | 2014 NPSL B12D3                       | 1.19      | 2.05      |
| 2014-10-25 | Seattle United NE White B02   | 1  | Newport FC Predator B02           | 1 | 2014 NPSL B12D3                       | 0.91      | 1.26      |
| 2014-10-18 | Seattle United NE White B02   | 3  | BYSC Select B02                   | 2 | 2014 NPSL B12D3                       | 1.90      | 1.68      |
| 2014-10-04 | Mercer Island FC Strikers B02 | 1  | Seattle United NE White B02       | 1 | 2014 NPSL B12D3                       | 1.04      | 1.32      |
| 2014-09-27 | Seattle United NE White B02   | 0  | Silver Lake Bombers B02           | 5 | 2014 NPSL B12D3                       | 0.83      | 2.88      |
| 2014-09-20 | FME Xtreme B02                | 4  | Seattle United NE White B02       | 0 | 2014 NPSL B12D3                       | 4.07      | 1.57      |
| 2014-09-13 | Seattle United NE White B02   | 1  | Real Everett B02                  | 1 | 2014 NPSL B12D3                       | 2.25      | 1.64      |
| 2014-09-06 | WS Wildcats B02               | 1  | Seattle United NE White B02       | 2 | 2014 NPSL B12D3                       | 3.03      | 0.66      |
| 2014-08-10 | Seattle United NE White B02   | 3  | Seattle United S White B02        | 1 | 2014 Shoreline Classic BU12           | 1.02      | 2.31      |
| 2014-08-09 | Seattle United NE White B02   | 0  | Seattle United Shoreline Blue B02 | 7 | 2014 Shoreline Classic BU12           | 0.39      | 5.67      |
| 2014-08-09 | Mukilteo Rush B02             | 3  | Seattle United NE White B02       | 1 | 2014 Shoreline Classic BU12           | 2.67      | 1.29      |
| 2014-08-08 | Cascade FC White B02          | 2  | Seattle United NE White B02       | 1 | 2014 Shoreline Classic BU12           | 2.00      | 1.33      |
| 2014-07-27 | Seattle United NE White B02   | 1  | Slammers White B02                | 0 | 2014 Crossfire Select Cup BU12 Silver | 1.70      | 1.14      |
| 2014-07-26 | Seattle United NE White B02   | 1  | Seattle Celtic Orange B02         | 1 | 2014 Crossfire Select Cup BU12 Silver | 1.78      | 0.30      |
| 2014-07-26 | Cascade FC White B02          | 2  | Seattle United NE White B02       | 3 | 2014 Crossfire Select Cup BU12 Silver | 2.00      | 1.33      |
| 2014-07-26 | Seattle United NE White B02   | 1  | Blackhills FC Black B02           | 4 | 2014 Sounders FC Cup BU12             | 0.71      | 4.01      |
| 2014-07-26 | 3 Rivers Black B02            | 10 | Seattle United NE White B02       | 0 | 2014 Sounders FC Cup BU12             | 11.58     | 0.23      |
| 2014-07-25 | Newport FC Supernova B02      | 5  | Seattle United NE White B02       | 0 | 2014 Crossfire Select Cup BU12 Silver | 4.45      | 0.81      |
| 2014-07-25 | Seattle United NE White B02   | 1  | NPSA Titans A B02                 | 5 | 2014 Sounders FC Cup BU12             | 0.93      | 4.23      |
| 2014-07-13 | Liga Tlaxtli B02              | 5  | Seattle United NE White B02       | 0 | 2014 Seattle Cup BU12                 | 5.85      | 0.45      |

| <b>date</b> | <b>home</b>                 |   | <b>away</b>                 |   | <b>venue</b>          | <b>pred.home</b> | <b>pred.away</b> |
|-------------|-----------------------------|---|-----------------------------|---|-----------------------|------------------|------------------|
| 2014-07-12  | Seattle United NE White B02 | 1 | Seattle United S Blue B02   | 7 | 2014 Seattle Cup BU12 | 0.71             | 5.92             |
| 2014-07-11  | FC Tacoma Blue B02          | 6 | Seattle United NE White B02 | 0 | 2014 Seattle Cup BU12 | 4.21             | 0.39             |